

DOAN BROOK WATER MONITORING PROGRAM

SITE 3 – GORGE TRASH RACK, DOAN BROOK GORGE (CLEVELAND)

Site Location

The GPS coordinates of the site are **latitude 41.494736, longitude -81.600529** (cut and paste the numbers into an online mapping program). The site is located before the intersection of MLK Jr. Drive and North Park Blvd. in Cleveland.

Directions

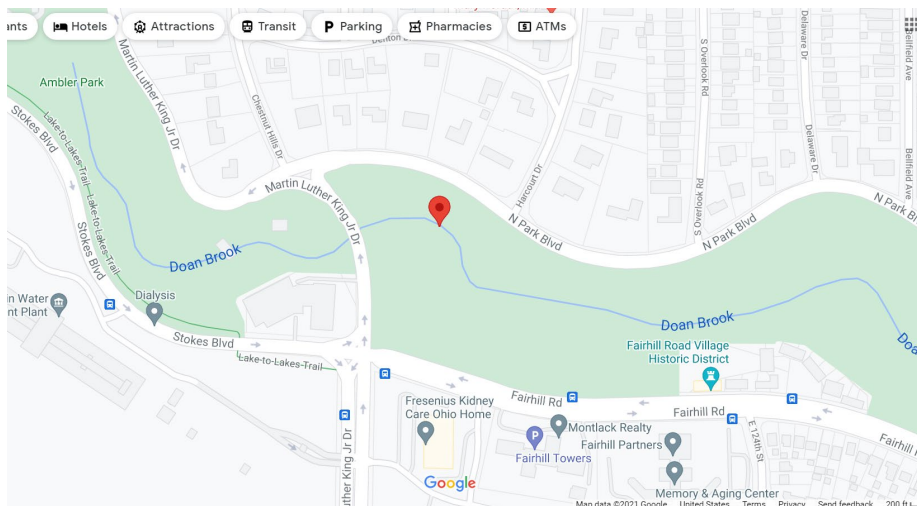
Input your location as the starting address and the coordinates as the ending address into an online mapping program.

Parking

Monitors should park on the maintenance road off of MLK Jr. Drive.

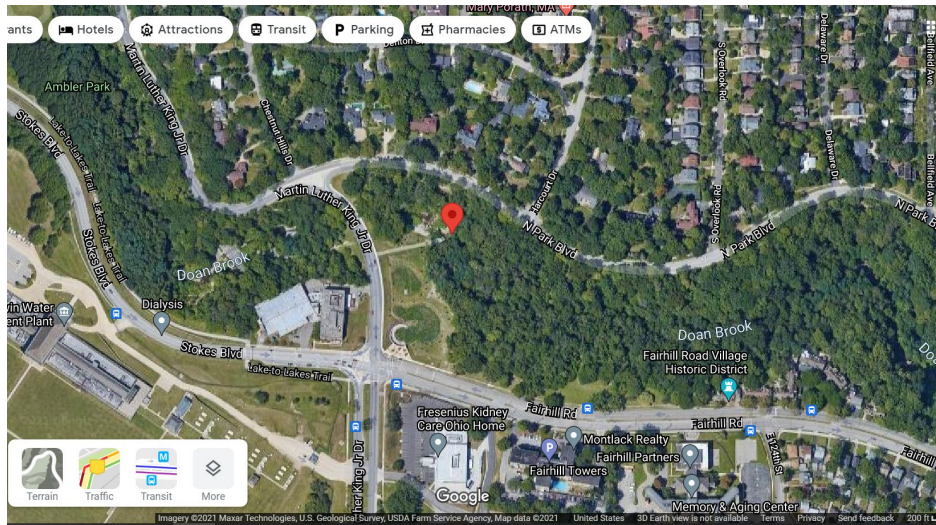


Location Street Map



DOAN BROOK WATER MONITORING PROGRAM

Birds Eye View



On Site Photos

