

DOAN BROOK WATER MONITORING PROGRAM

SITE 7 – GREEN LAKE, SHAKER PARKLANDS (SHAKER HEIGHTS)

Site Location

The GPS coordinates of the site are **latitude 41.474972, longitude -81.564000** (cut and paste the numbers into an online mapping program). The site is surrounded by Andover Road and Parkland Drive. Walk toward the right side of the foot bridge to sample.

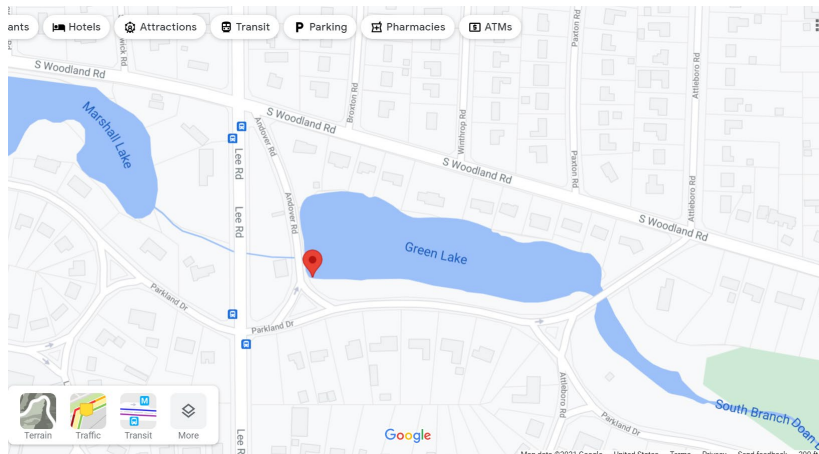
Directions

Input your location as the starting address and Green Lake as the ending address into an online mapping program.

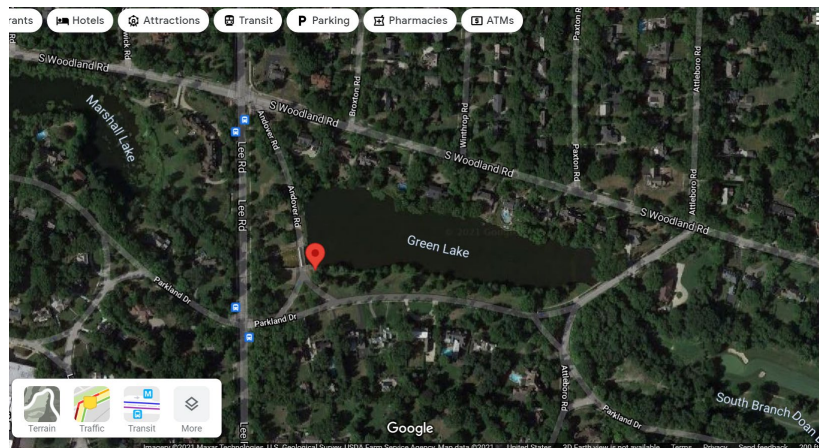
Parking

Monitors should park on the turn around on Andover Road.

Location Street Map



Birds Eye View



DOAN BROOK WATER MONITORING PROGRAM

On Site Photos

